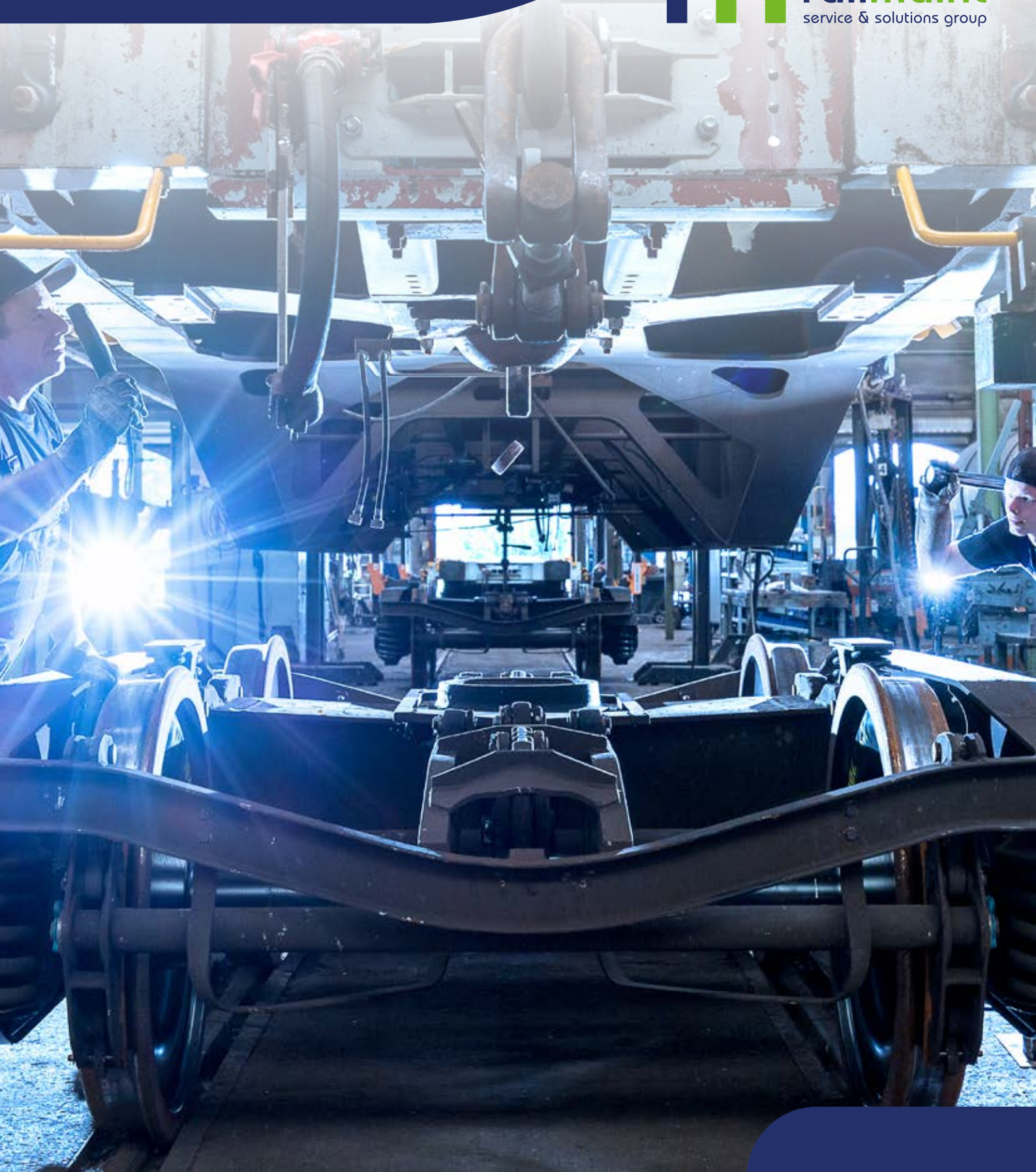


**WE PROVIDE  
MOBILITY!**



# RailMaint – We provide mobility!

## ... our corporate vision

We see ourselves as the leading independent service and solution provider for the maintenance and modernisation of railway vehicles & components in passenger and freight transport.

We embody availability. Thanks to exceptional competence and consciousness of quality, we guarantee the timely execution of our customers' wishes and the greatest possible operational availability of your fleets.

Some 800 employees work at RailMaint GmbH's five current locations in Delitzsch, Duisburg, Kaiserslautern, Leipzig and Oberhausen/Bavaria and respective service stations.

We provide a comprehensive range of maintenance services and mobile services for your railway vehicles, such as passenger carriages of regional and long-distance transport, suburban trains and regional trains, freight and tank cars and their components.



## Our range of services

- Commissioning
- Revision
- Accident repair
- Simple repairs
- Modernisation and paintwork
- Reconditioning of railway vehicle components such as wheelsets, bogies, draw hooks, buffers and toilet modules
- Tank car cleaning
- Interior design, colour scheme
- Mobile service
- Scheduled work
- On-site maintenance

The RailMaint team looks forward to hearing from you!

Please contact us:

... via telephone at:

**00800 3706 2217**

... or via email at:

**[vertrieb@railmaint.com](mailto:vertrieb@railmaint.com)**



# FREIGHT TRANSPORT

## **Comprehensive maintenance competence putting freight cars on the right track**

No matter whether it's for production or for retail, for short or long-distance transport – the supply of goods with rail-bound vehicles ranks among the safest and cost and emission-efficient means of transportation.

The repair and maintenance of freight cars of various models is RailMaint GmbH's core business. Our plants boast decades of tradition and recognised expertise in the analysis and processing of

tasks such as revisions, necessary repairs, paintwork and modernisation work. We are happy to pass on this experience to our customers, since it is only possible to operate successfully in freight transport if your vehicles are always ready for deployment through the help of reliable maintenance. The RailMaint network of workshops, branches and a number of mobile service teams ensures that freight cars in need of repair, not only stationary and nationwide, but also across borders and in transit traffic, can be located and treated at any time. This saves our business partners costs and unnecessary downtime.





## Our range of services in the field of freight transport includes:

- Maintenance and repair of freight cars of various models
- Revisions, modernisation, as well as overhauls and new constructions
- Wheelset and bogie reconditioning
- Repair, test and reconditioning of components such as: Buffers, draw hooks or traction and buffer gear
- Internal and external cleaning of freight and tank cars, for example of mineral oils and chemicals
- Relaxing and degassing of pressurised gas tank cars
- Painting work
- Mobile maintenance and repair service







# PASSENGER TRANSPORT

## A high level of professionalism for all tasks concerning multi-unit rail cars and passenger carriages

Securely closing doors, comfortable seats, temperature-variable air conditioning, clean toilets or reliability – whether in passenger carriages or in regional suburban trains, every traveller has high expectations of the comfort of railway vehicles in passenger transportation. Maintenance and repair services on passenger cars thus always support the respective vehicle owner in his efforts to acquire passengers and customer service. The services for multi-unit rail cars and all vehicle types for passenger transport at RailMaint GmbH are

concentrated within the Delitzsch plant – a location that can look back proudly on more than 100 years of tradition. Thanks to the expertise that has been acquired in this time, RailMaint GmbH is able to provide a broad range of individualised services for the on-site maintenance of passenger cars. We hereby always have the evolving requirements in technology and electronics in mind, as well as the increasing demands in quality of passengers, since this is the only way that we can provide effect support to our customers for their personal business success.



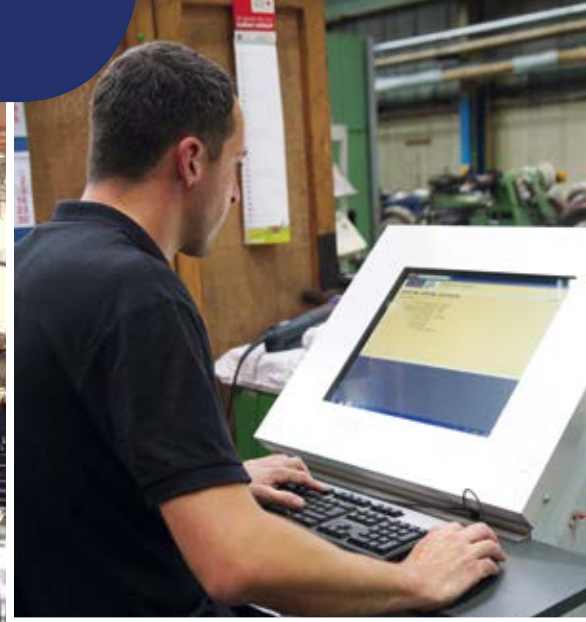




## Our range of services in the field of passenger transport includes:

- Revisions and main inspections
- Modernisation and modifications
- Maintenance and (accident) repair
- Wheelset and bogie reconditioning
- Carpentry, upholstery and flooring work
- Cleaning, decalcification and reconditioning of toilet systems
- Paintwork and film adhesion
- Mobile service







# SPECIAL SERVICES

RailMaint GmbH presents itself as a modern, effective and flexible company servicing your railway vehicles and their components.

We fulfil our orders to the highest standards and are able to offer our customers a comprehensive range of services.

## Benefit from our range of services:

- Mobile service
- Components
- Tank car cleaning
- Pipe and container cleaning
- Non-destructive testing (NDT)
- Train protection system / train radio





## Mobile service

### Traffic-oriented maintenance on the scene

Railway vehicles have long been in operation, not only in their country of origin, but across borders to neighbouring countries in all directions. Germany in particular is a strongly frequented transit country. The increasing flexibility and the related demand to have to transport passengers, goods and products from one place to another quickly makes it necessary to have vehicles that are ready for deployment at all times. And yet, often you don't have the time to take the vehicle into the workshop. Or a train comes to a halt on the track due to unexpected defects, an obstacle or in the event of an emergency – all situations in which only a mobile service arriving rapidly to the

deployment site can help and repair. The locations of RailMaint GmbH in Germany have been equipped with mobile deployment teams for many years now that are ready for action at all times and at any location with specially equipped workshop vehicles. In future, we want to create an even more varied mobile service, one step at a time, which will not only process damage claims, but will also be able to carry out regular maintenance works on site – whether on open track, at stations, terminals or harbours. We literally want to “go the extra mile” in order to lower the downtimes of your vehicles and their factory intake. This significantly increases the availability of the vehicles and saves costs.





**In addition to maintenance tools, our workshop vehicles are equipped with the following features among other things:**

- Mobile lifting equipment
- Mobile brake testing equipment

**Range of services includes:**

- Incoming inspection of trains with the immediate repair of minor damages (Quickfix)
- Correction of displaced load
- Align, repair or replacement of defective (mechanical) parts of all types
- Part replacement: Buffers, (suspension) springs, air shut-off valves, screw couplings, control valves and more
- Adjustment and lubricating work
- Brake maintenance and inspection; Replacement of brake coupling hoses; Brake testing on auxiliary vehicles
- Tank car: Replacement of tank fittings, valve and seal maintenance, emergency draining
- Sliding wall cars: Repair of doors, walls or floors
- Covered and uncovered powder wagons: Adjustment and repair of flaps, doors or roofs
- Repair of ladders, handles and operating elements / fittings
- Repair and renewal of inscriptions
- Vehicles with serious damages, which cannot be repaired on site are brought to the plants for maintenance work

## Components quickly and reliably in use

With our continuous influence, our capacities and our effective, integrated supply, we ensure quick access to like new, reprocessed components, all the way to high-grade components. We guarantee our customers cost-efficient handling as well as a low capital tie-up thanks to short transit

times and high supply safety. This way we are able to greatly increase the competitiveness of our customers. We hereby constantly ensure more effective production processes as well as improved quality and document each individual component for comprehensive control and tracking.










Our range of services hereby comprises the following components:

-  **Wheelsets**
-  **Bogies**
-  **Traction and buffer gear**
-  **Brake components**
-  **Seating and cushioning elements**

-  **Toilet facility modules**
-  **Electrical and electronic components**

 **WIST - Wheel Set Inspection Supporting Tool**

Targeted knowledge, process and logistics management – The revolution in wheelset reconditioning.

  
Made in Germany

## Industrial cleaning and pressurised gas tank relaxing

In order to put your tank car back in to operation after on-site maintenance, a tank inspection or a product changeover, we offer you the reliable cleaning of almost all products of the mineral oil, liquid gas and chemical industry. Thanks to cutting-edge industrial cleaning facilities and our own biological wastewater treatment facilities, our qualified specialists process your vehicles quickly and reliably. Any arising remaining loaded goods are disposed of or recycled professionally under observation of the statutory provisions, thus ensuring the flexible deployment of your vehicle for the next load.

### **Our range of services in the field of industrial cleaning and pressurised gas tank relaxing comprises:**

- Interior and exterior cleaning of chemical and mineral oil tank cars, as well as freight cars and other railway vehicles
- Pressurised tank car relaxing and inertisation (nitrogen flushing)
- Cleaning in accordance with the UIP cleaning key
- Graffiti removal
- Creation of interior and exterior findings
- Pickling, passivation, internal blasting
- Repair of rubber coating
- Cleaning product list upon request





## Pipe and container cleaning

Train toilets that are soiled or clogged cast an unpleasantly negative light on the travel quality in passenger transport. In order to ensure that your passengers can enjoy a comfortable journey and find a fully functioning toilet at all times, we have continued to develop our pipe and container cleaning services for you.

**Our services in the field of pipe and container cleaning consist of the removal of typical signs of defects such as:**

- Blockages caused by the malfunction of the toilet facilities
- Insufficient suction performance of the suction system

- Pipe decalcification
- Clogged suction pipelines

**We offer the following services:**

- Removal of lime and urine scale deposits in pipeline and container facilities
- Additional services such as the decalcification of freshwater containers
- Removal of paper and garbage from grey water and faecal tanks

**All pipe and container cleaning services can also be carried out on-site at your premises by our mobile service team.**

## Non-destructive testing

Railway vehicles are in operation on a daily basis, endeavouring to bring persons and goods safely to their desired destination. This can lead to wear, various damages or even failures and influence the operational safety. In order to guarantee that the required technical target state is maintained there is a defined maintenance system. The requirement for this is for example general inspection. Depending on the areas of deployment one or more non-destructive test procedure are carried out. As a recognised inspection body in accordance

with DIN 27201-7, RailMaint GmbH is at your side with experienced experts in the field of railway maintenance (Ir) and service testing for manufacture and maintenance (Is).

### Our methods

- Ultrasonic testing (UT)
- Magnet particle examination (MT)
- Visual testing (VT)
- Penetration test (PT)





## Train protection systems

Train protection systems play a central role in rail transportation. These technical facilities and systems secure access routes in a whole variety of ways. One example is the automatic braking procedure if signals are not observed or if permissible

speeds are not adhered to. In order to ensure the availability of your railway vehicles in the event of a system failure, our mobile team comes to you. Our qualified staff inspects, services and repairs your train protection and train radio systems on site.



# LOCATIONS

## WE PROVIDE MOBILITY!

### RAILMAINT SALES

Service phone number: 00800 370 622 17

Email: [vertrieb@railmaint.com](mailto:vertrieb@railmaint.com)

### RAILMAINT HEADQUARTERS

Karl-Marx-Straße 39, 04509 Delitzsch

Tel.: +49 (0) 34202 970 0

Fax: +49 (0) 34202 970 307

[www.railmaint.com](http://www.railmaint.com)

E-Mail: [info@railmaint.com](mailto:info@railmaint.com)

### DELITZSCH PLANT

Karl-Marx-Straße 39, 04509 Delitzsch

Tel.: +49 (0) 34202 970 302

Fax: +49 (0) 34202 970 303

#### Approach data

Railway station no.: 231 720

Reference figure: 820-46

Station: Delitzsch Unterer Bahnhof

AGL: Delitzsch plant

### Naples branch office

### DUISBURG PLANT

Wintgensstraße 91, 47058 Duisburg

#### Approach data

Railway station no.: 226 654

Reference figure: 281-64

Station: Duisburg Hafen

### KAISERSLAUTERN PLANT

Pariser Straße 300, 67663 Kaiserslautern

#### Approach data

Railway station no.: 699 058

Reference figure: 441-23

Station: Einsiedlerhof

AGL: Kaiserslautern plant

### WERK LEIPZIG

Werkstättenstraße 4, 04319 Leipzig

#### Approach data

Railway station no.: 375 626

Reference figure: 820-01

Station: Engelsdorf

AGL: Leipzig plant

### REPAIR BASE WOLFSBURG

at Volkswagen AG

Wolfsburg PF 6815, 38436 Wolfsburg

### OBERHAUSEN PLANT

Sinninger Straße 11, 86697 Oberhausen

#### Approach data

Railway station no.: 020 487

Reference figure: 625-00

Station: Unterhausen/Bavaria

### Ingolstadt branch

Railway station no.: 204 248

Station: Ingolstadt Hbf

All workshops of RailMaint are technically approved and certified in accordance with EN ISO 9001, EN ISO 14001, EN ISO 18001 and EN ISO 50001. Equally, they all possess an ECM company classification and the Delitzsch plant is in possession of the IRIS certification. Detailed information on all certifications and approvals of RailMaint are provided by the individual locations.



● Plants

● Branch offices

## Delitzsch plant

### Maintenance specialist for multi-unit rail cars and passenger carriages

Located right on the Leipzig – Berlin rail route, the Delitzsch plant with its more than 100-year history has flourished into a maintenance centre for the revision, modernisation and new construction of rail-bound passenger vehicles. A workshop area of 46,000 m<sup>2</sup> with two production halls ensures the on-site processing of individual service requests. In order to sustainably support the business success of the commissioning vehicle owner, our staff with high technical expertise always find the best solutions for a safe, punctual and comfortable passenger rail transport – under observation of policy and country-specific norms/standards.

### Infrastructure

- Railway track: 16.5 km
- Total surface area: 270,000 m<sup>2</sup>
- Two production halls with three continuous working tracks
- Lifting jacks for double-decker cars, block trains, coupled cars as well as movable sides and roof platforms
- Separate workshops for wheelset and bogie work; Wheelset pressing machine and wave grinding machine
- Blast machine and painting complex for vehicles up to 30 m as well as for painting multi-unit rail cars, without having to separate them







- Separate workshops for upholstery, carpentry and flooring work as well as sheet metal forming
- Ultrasound, high voltage, electronic and climate test benches

### Range of services includes:

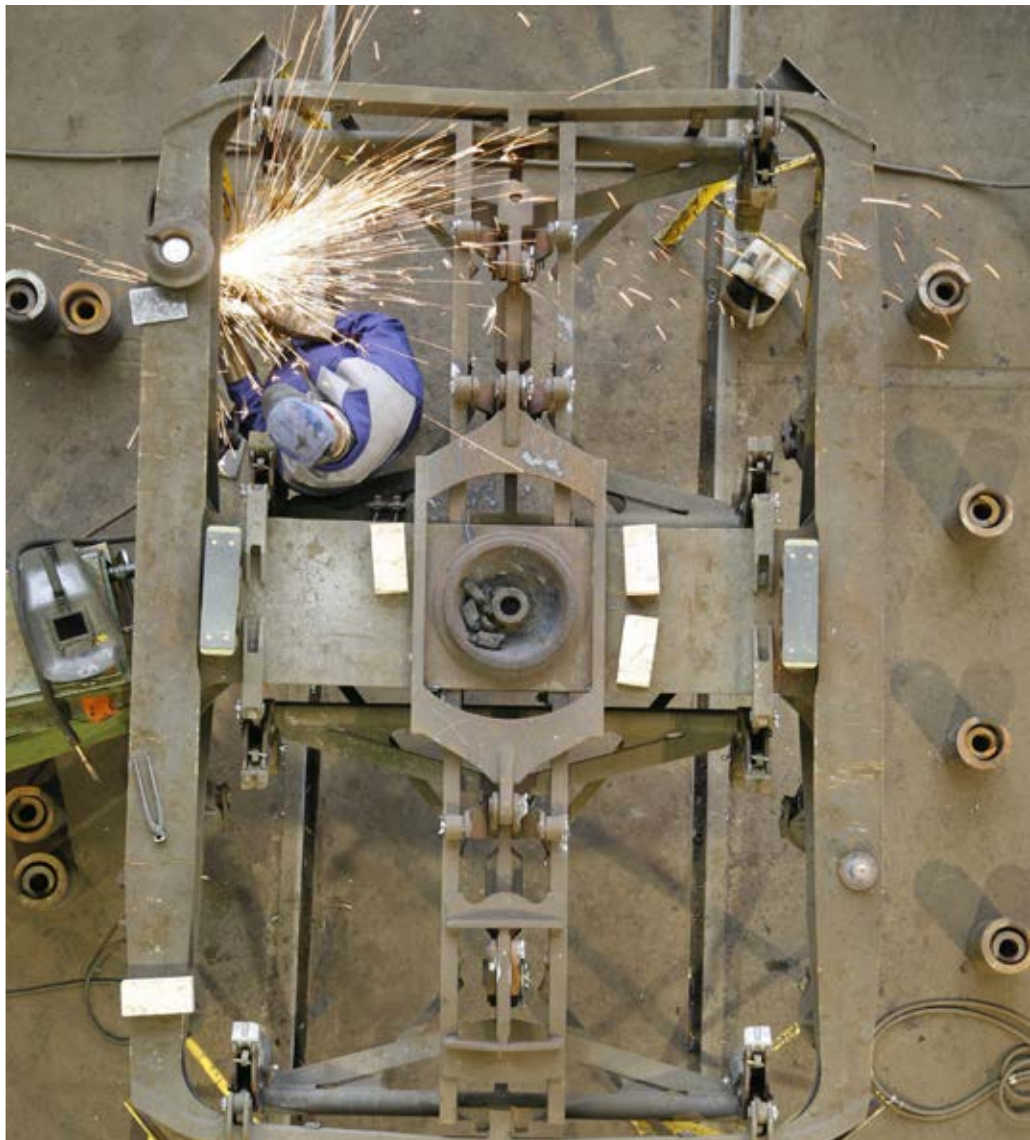
- Revision of railway vehicles, both of digital train radio equipment (GSM-R) and inductive train protection systems, brake and running gear equipment, electrical and electronic equipment
- Modernisation and modifications
- Damage analysis, maintenance and accident repair, documentation
- Wheelset and bogie reconditioning for all maintenance stages
- Partial and full colour scheme through paintwork or film adhesion
- Maintenance of passenger information systems, door and transitional facilities
- Upholstery, carpentry and flooring work
- Cleaning, decalcification and reconditioning of toilet systems
- Preventative graffiti protection
- Mobile pipe cleaning
- Mobile service

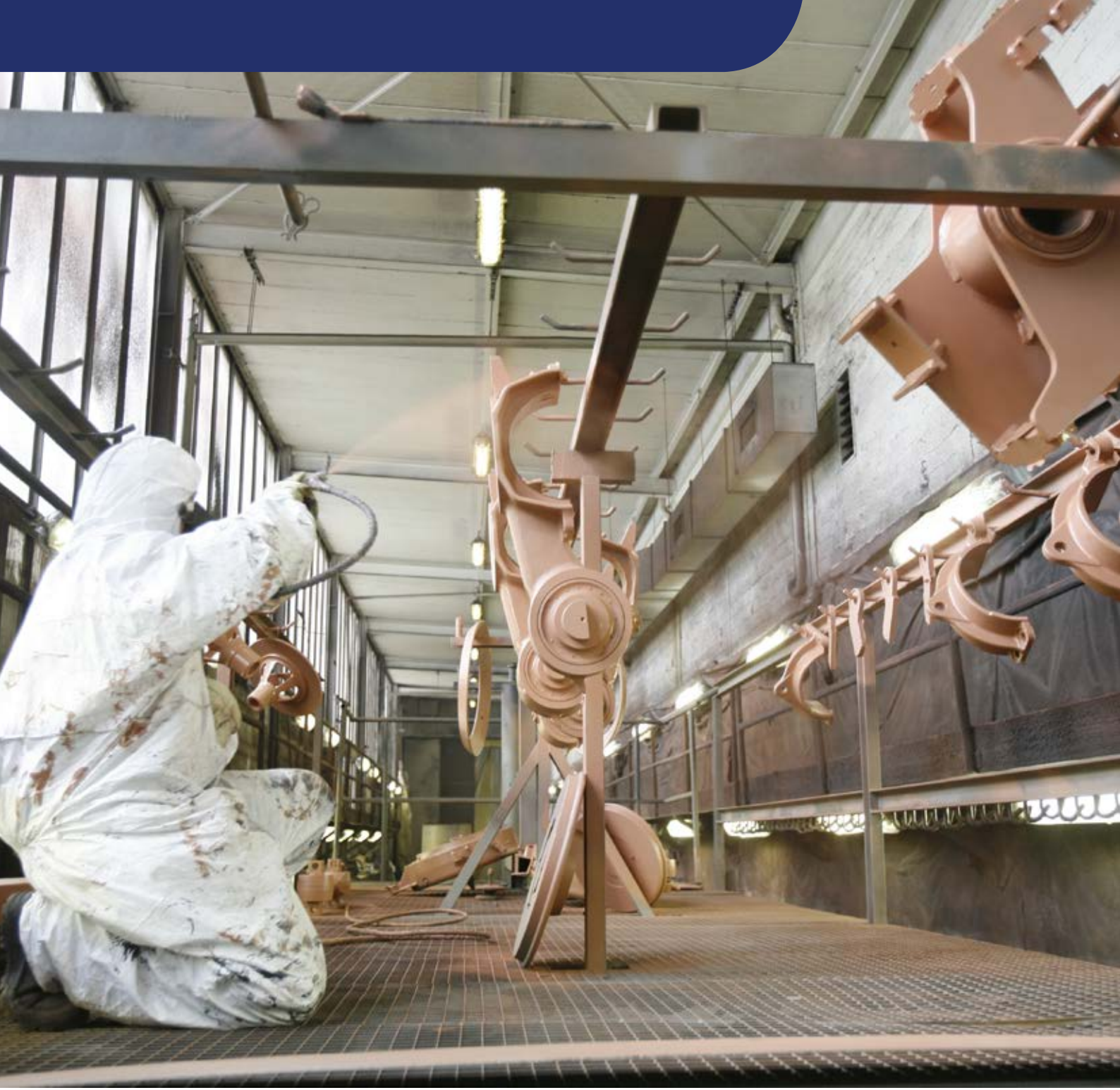
## Duisburg plant

### Freight car expertise right at Europe's highly frequented transport axis

Not only the central location of the Duisburg plant at Duisburg harbour, Europe's largest inland port, but also its proximity to the Benelux countries and the sea port of Rotterdam provides all customers with significant logistical advantages. At the smallest RailMaint GmbH location, our vehicle specialists professionally carry out all necessary main-

tenance and repair tasks for freight cars – and this always in accordance with the applicable technical rules under consideration of individual requirements and this across borders. And the employees of the mobile service in Duisburg also possess comprehensive expertise: With their own workshop vehicle they are quickly on site with vehicles that have come to a stop on the track, in order to carry out maintenance works and minor repairs or to help through emergency response in an emergency.





### Infrastructure

- Railway track: 5 km
- Total surface area: 11.000 m<sup>2</sup>

### Range of services include:

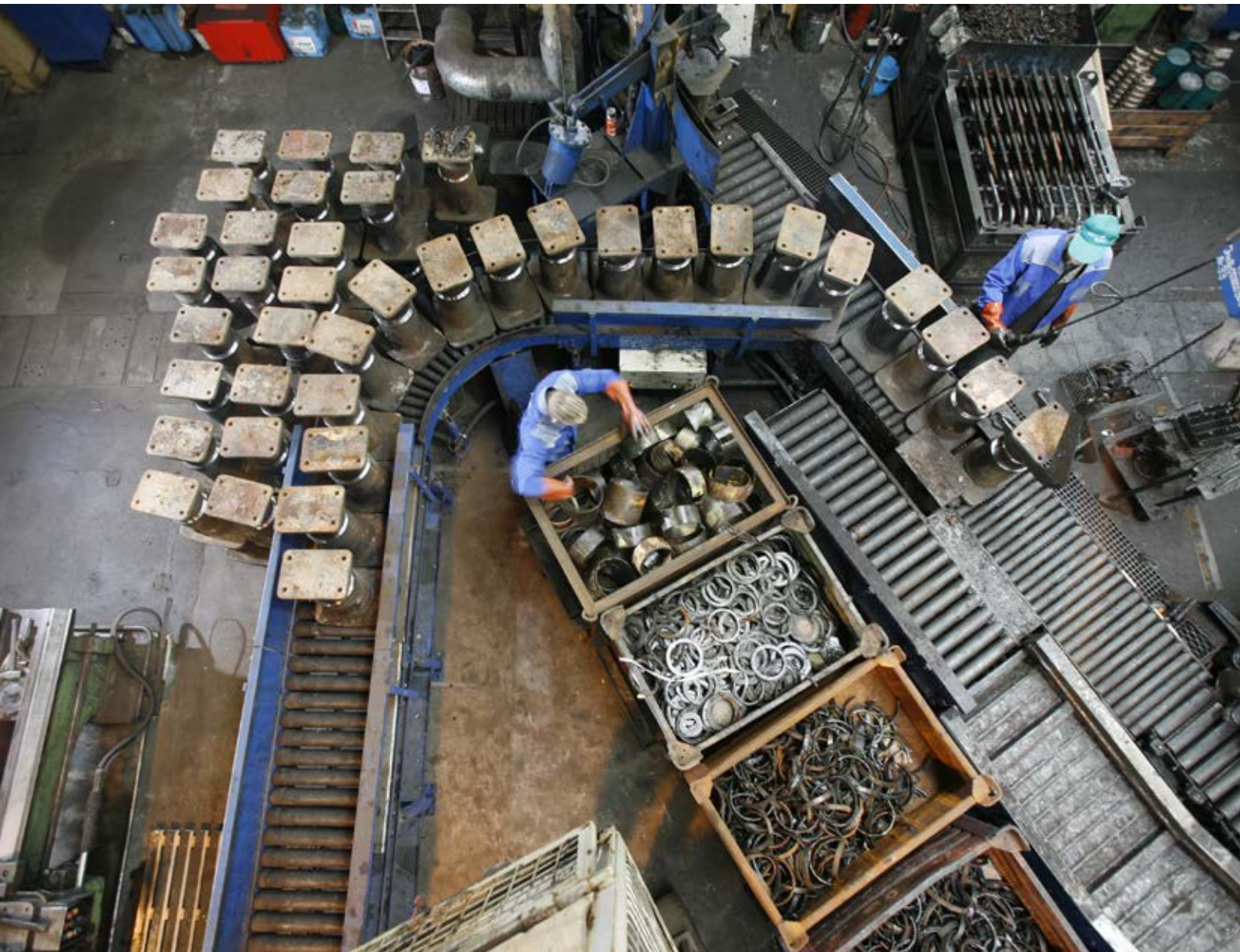
- Maintenance and revision
- Wheelset reconditioning
- Repair, modification and modernisation
- Regular and special services such as repainting or exterior cleaning
- Mobile service

## Kaiserslautern plant

### The “competence centre for components” in the Pfalz

RailMaint GmbH concentrates the maintenance and reconditioning of components in its Kaiserslautern plant. For decades, all tasks for a professional component service rank among the core competence of the location, meaning that the technically highly qualified employees based

here have acquired comprehensive experience in this area. Work is carried out on vehicle components such as brake parts, damping elements, couplings or traction and buffer gear using modern manufacturing methods and testing technology. Furthermore, the plant offers solutions for all classic tasks of freight car maintenance and repair such as damage repair, revision, modification or modernisation.





## Infrastructure

- Railway track: 10 km
- Total surface area: 27,000 m<sup>2</sup>
- Generously dimensioned track ladder as well as manufacturing tracks with lifting equipment and flexible working platforms
- Smouldering, washing and belt shot blaster machines
- Wheelset, bogie, hydraulic and metal workshop

## Range of services include:

- Repair, testing and reconditioning of components such as buffers, draw hooks, traction and buffer gear, couplings, friction springs or hydraulic capsules
- The offer covers some 300 buffer types, more than 70 draw hooks and more than 80 friction spring types
- Upon request new and special manufacture of components
- Wheelset reconditioning up to IS2
- Repair, revision, modification and modernisation of freight cars
- Regular and special services in the fields of corrosion protection, blasting and painting techniques, metalworking, steel construction as well as for more extensive welding work
- Mobile service

## Leipzig plant

### Freight car expertise for more mobility

In the more than 100 years of its existence, the Leipzig plant has acquired a consummate professionalism in the qualified processing of all requirements when carrying out maintenance on rail-bound freight cars. This includes scheduled and unscheduled maintenance work, as well as individ-

ual services such as tank car cleaning or corrosion protection. This location possesses outstanding expertise for vehicle overhaul and modernisation: Its engineering team finds sustainable solutions even for complex projects, which are implemented accurately and on site. A mobile service team is available at the plant to carry out any necessary repairs on the track.





## Infrastructure

- Railway track: 10 km
- Total surface area: 25,000 m<sup>2</sup>
- Blast facility
- Paint shop
- Tank car – interior and exterior cleaning facility
- Incineration for liquid gas

## Range of services includes:

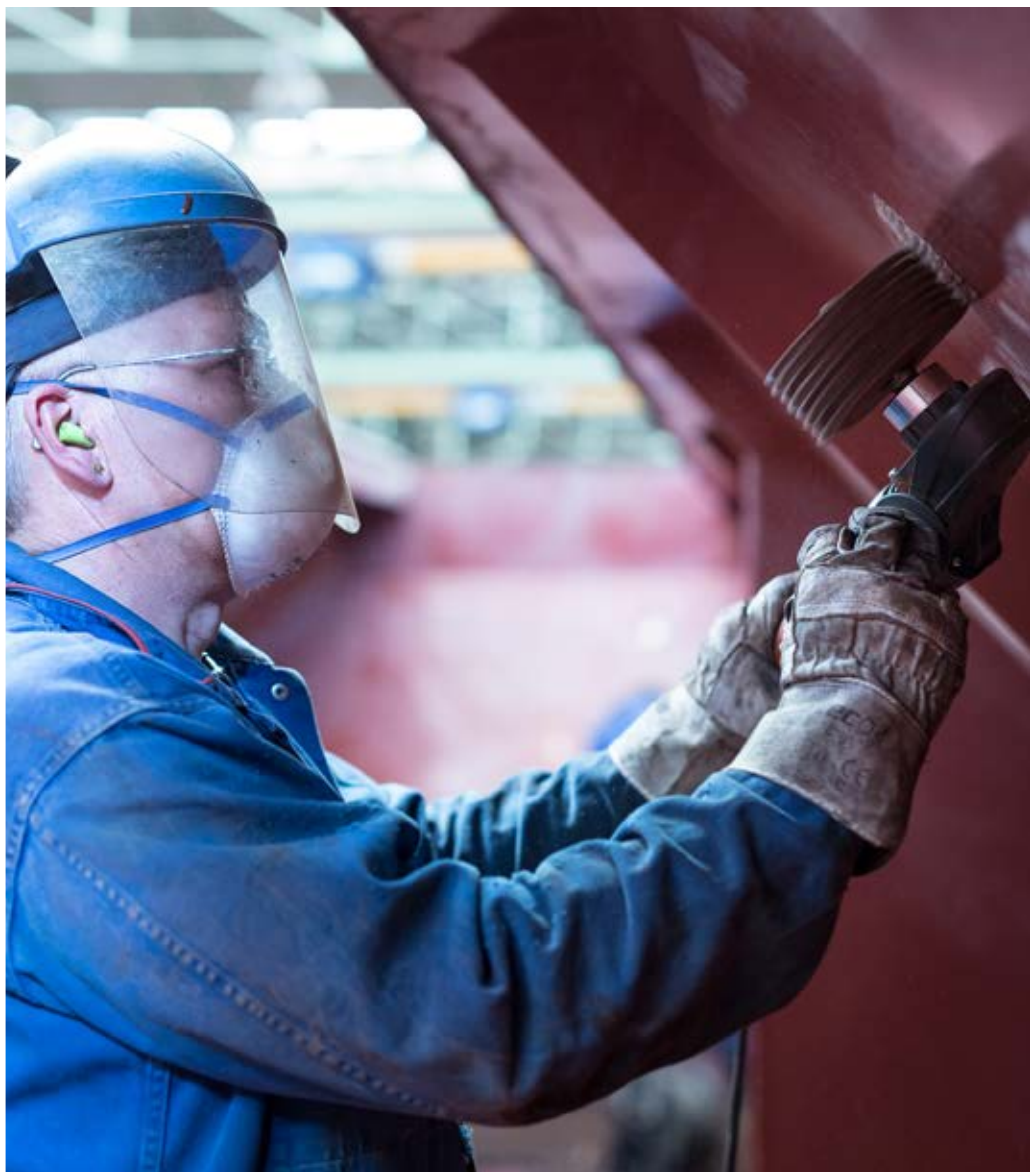
- Maintenance and revision, necessary repairs
- Wagon overhaul and modernisation
- More comprehensive welding work
- Interior and exterior cleaning of freight and tank cars for a multitude of mineral oil and chemical products
- Relaxing and degassing of pressurised gas tank cars
- Graffiti removal
- Partial and complete painting, corrosion protection
- Mobile service

## Oberhausen plant

### All-inclusive service for rail-bound freight cars

The Oberhausen plant, with its close geographical proximity to the railway hubs of Ingolstadt, Augsburg, Munich, Regensburg and Nurnberg, as well as to southern European, boasts a key requirement for the on-site processing of orders. In addition to a wide variety of services regarding the maintenance and repair of freight cars, the location is also renowned for the cleaning and

reconditioning of tank cars. The unique combination of providing cleaning and subsequent maintenance work ensures a quicker availability of the vehicles. Our staff is employed in the workshops of Oberhausen and Ingolstadt – located directly at the heart of the freight and tank car hub of Ingolstadt, while multiple mobile service teams perform quick and necessary repairs on the tracks. And this both at strategically key terminals in southern Germany as well as in neighbouring countries.







### Infrastructure

- Railway track: 10 km
- Total surface area: 14.000 m<sup>2</sup>
- Industrial cleaning facility for pressurised gas, chemical and mineral oil tank cars
- In-house biological wastewater treatment facility
- Pressurised gas tank relaxation and nitrogen rinsing facility
- Service station at Ingolstadt

### Range of services includes:

- Maintenance and revision; overhaul and modernisation
- Interior and exterior cleaning of freight and tank cars, in particular of the mineral oil and chemical industry
- Disposal of residual loaded goods under observation of the statutory provisions
- Creation of interior findings
- Preparation of the tank cars for chemical loaded goods through pickling, passivation or inside blasting
- Relaxing and degassing of pressurised gas tank cars as well as their inertisation (nitrogen rinsing)
- Wheelset reconditioning
- Mobile service



# CAREER AT RAILMAINT GMBH

## Into the future with the best of knowledge

The railway sector ranks in its diversity and size as one of the most important in Germany. The various tasks and possibilities it offers ensure a safe future for many employees and present them with new challenges on a daily basis in both a professional and personal capacity. In order for the employees of RailMaint GmbH to be up to the task, to equip them with expertise and knowledge that is up to date with the latest (railway vehicle) technology or teach them the latest production methods, RailMaint GmbH places a special focus on personnel development. For this purpose, RailMaint GmbH among other things possesses an in-house training centre with equipment that is used to learn and train workflows practically, as only highly qualified employees are able to competently execute the demanding orders of a maintenance service provider and thus make a significant contribution towards a company success that is rooted firmly in customer satisfaction.

The further training measures are open to all RailMaint GmbH staff and are regularly determined in personnel development reviews. The training programme is oriented to company objectives, but also to the requirements of customers and business partners. It is formed among other things of regular seminars on work safety and environmental protection, and offers practical training ranging from special tasks such as crane operation or tank car cleaning all the way to foreign language lessons and PC training. Workshops regularly take place in co-operation with industry partners.

Thanks to its personnel development measures, RailMaint GmbH strives – especially in times with a shortage of skilled workers and young recruits – to remain an attractive employer for its workforce and to attract the interest of potential new employees. And last but not least, in order to be able to guarantee its business partners a long-term reliable, innovative and dependable maintenance of their vehicle fleets.



## Some of the core issues of personnel development at RailMaint GmbH:

- Allocation of training positions in technical and commercial fields
- Fostering of both the personal and professional expertise of internal junior staff
- Long-term and targeted retention of skilled workers and managers
- Comprehensive training program with training and courses led by experienced internal or external speakers
- Professional, financial support, and time for self-initiated further training such as part-time degree courses
- University recruitment of students and diploma students from the fields of engineering, mechanical engineering and business administration; The awarding of internships or bachelor, master and diploma project work
- Promoting the transfer of knowledge between the respective locations of RailMaint GmbH through company-wide training and events
- Interdisciplinary co-operations on didactic and specialised topics with industry partners, bodies and educational institutions



## Have we aroused your interest?

... then contact us at:

[bewerbung@railmaint.com](mailto:bewerbung@railmaint.com)



**RailMaint GmbH**

Karl-Marx-Straße 39  
04509 Delitzsch

 + 49 (0)34202 970 0

 + 49 (0)34202 970 307

 [info@railmaint.com](mailto:info@railmaint.com)

Represented by the Managing Director:  
Andreas Ditsche

Company's registered office: Delitzsch  
Commercial register: Leipzig HRB 29038  
VAT ID no.: DE 252284245

**RailMaint Sales**

 00800 3706 2217

 [vertrieb@railmaint.com](mailto:vertrieb@railmaint.com)